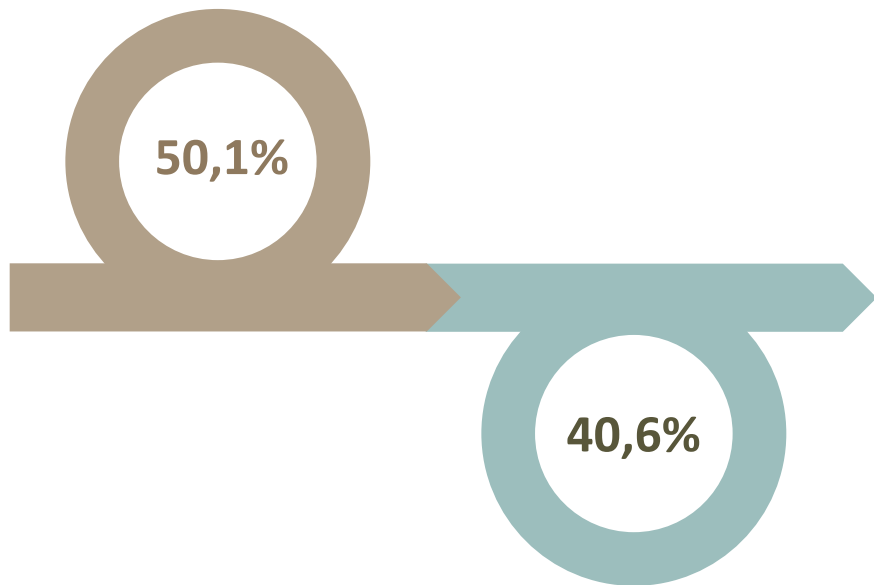


Winter Hotel Observatory: Weekly Survey on the Performance of Year-round Operating Hotels

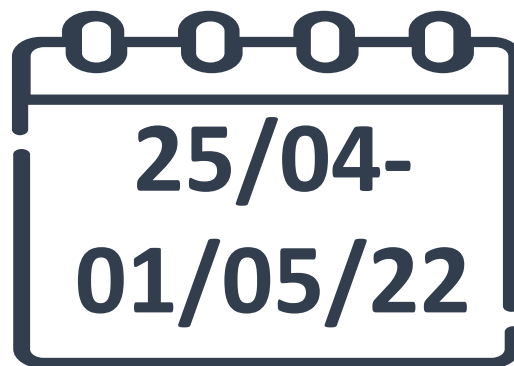


SURVEY TITLE	Weekly Survey on the Performance of Year-round Operating Hotels 2021
ASSIGNING BODY	Hellenic Chamber of Hotels (HCH)
CONDUCTING BODY	Research Institute for Tourism (RIT)
REFERENCE PERIOD	12/2021 - 03/2022
SURVEY TIME PERIOD	01 December 2021 – 30 April 2022 / weekly
DELIVERABLE DATE	9 May 2022
POPULATION	Greek Hotels
STATISTICAL UNIT	Hotel Unit, Rooms
REGISTRY	HCH Registry – Year-round Operating Hotels
CLASSIFICATIONS	NACE, Category, Size, Altitude
SAMPLING METHOD	Panel
WEIGHTING	Triple (Category, Region, Size)
SAMPLE/POPULATION SIZE	Panel size = 230 / N = 3.509
COLLECTION METHOD	CAWI

Average occupancy rate of open year-round operating hotels



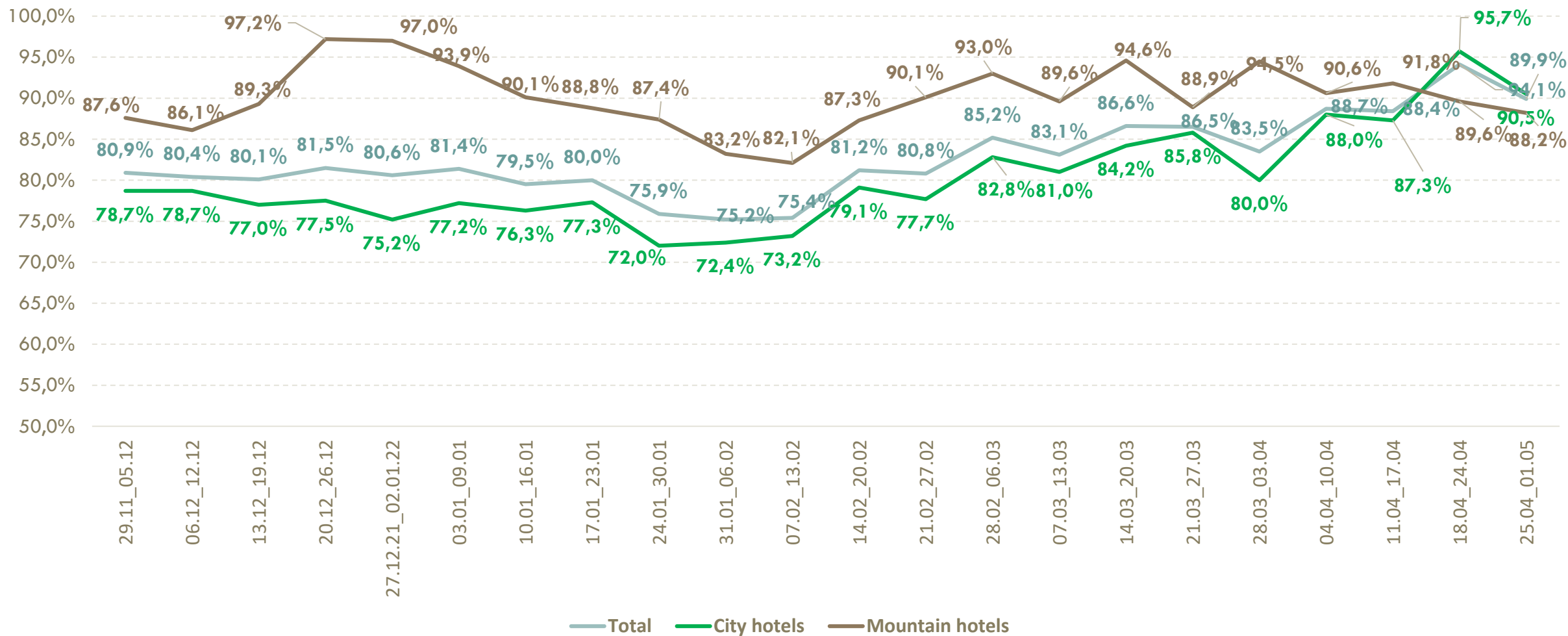
Average occupancy rate of total year-round operating hotels



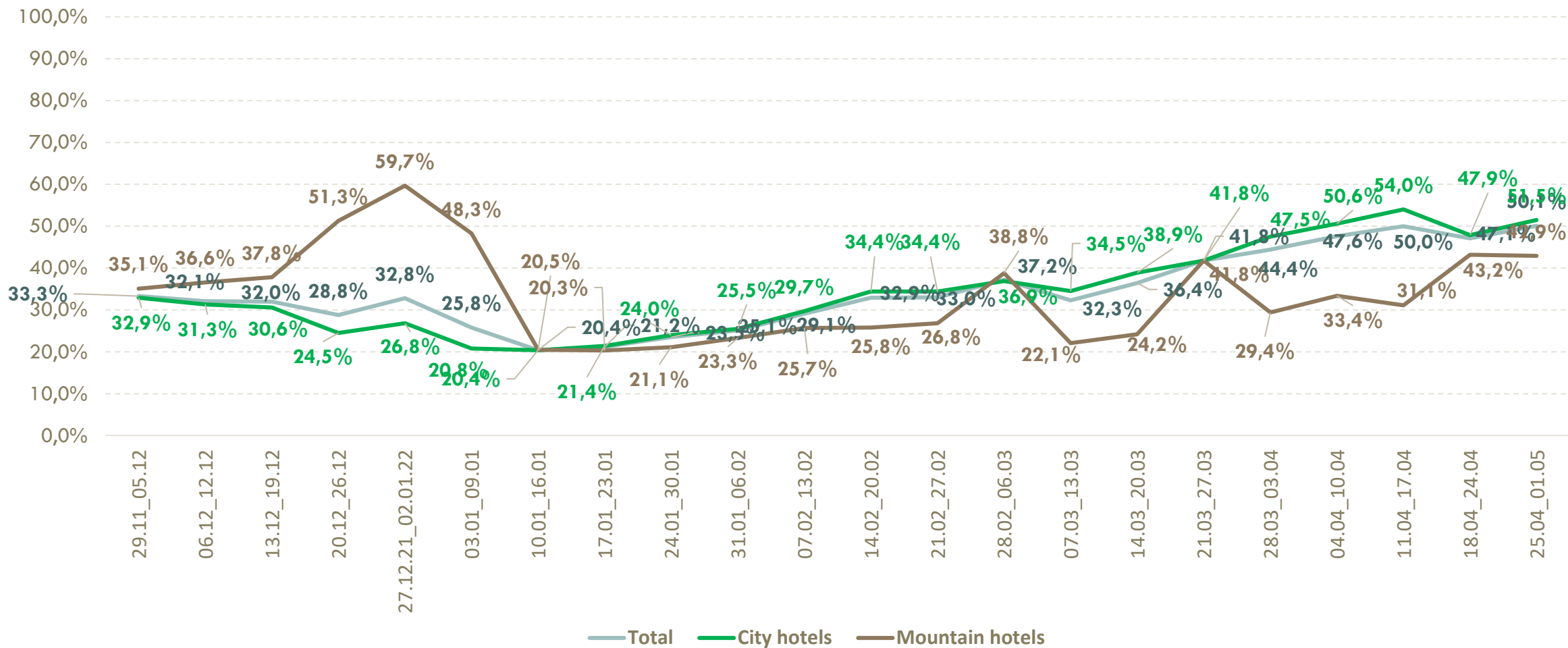
Average room rate of double room



Evolution of hotel opening



Occupancy rate of open hotels, by week



Occupancy rate, projection to total hotel capacity

